

间距 12.7、14.5 mm  
Pitch .500" .571"

栅栏式接线端子  
Barrier Terminal Blocks

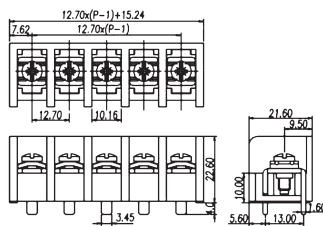
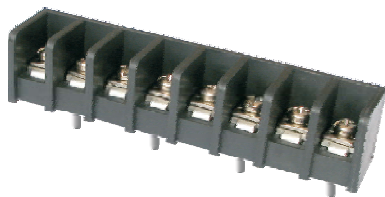
**B 12.7**  
接线端子参数

额定电参数  
压线范围  
螺钉力矩  
外壳  
工频耐电压  
绝缘抵抗  
使用温度

Rating  
Wire Range  
Screw/Torque Rating  
Insulator Body  
Insulation withstand Voltage  
Insulation Resistance  
Operating Temperature

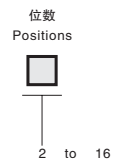
600V, 45A  
18~8 AWG  
M4, 18Kgf c m  
PBT, UL94 V0  
AC2500, 1Min.  
1000MΩ, DC500V  
-40°C~+130°C

**B 12.7-HFR**



**How to Order**

B12.7-HFR



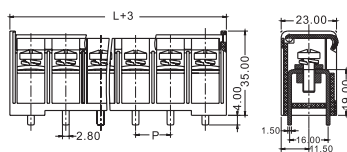
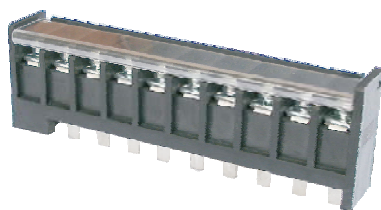
**PM 16**  
接线端子参数

额定电参数  
压线范围  
螺钉力矩  
外壳  
工频耐电压  
绝缘抵抗  
使用温度

Rating  
Wire Range  
Screw/Torque Rating  
Insulator Body  
Insulation withstand Voltage  
Insulation Resistance  
Operating Temperature

600V, 40A  
22~8 AWG  
M5.25Kgf c m  
PBT, UL94 V0  
AC4000, 1Min.  
1000MΩ, DC500V  
-40°C~+130°C

**B 14.5TC-HD**



**How to Order**

B14.5TC-HD

