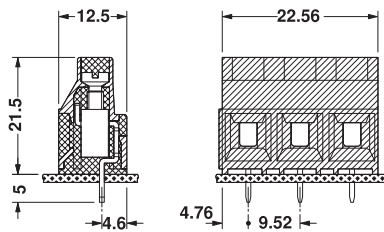


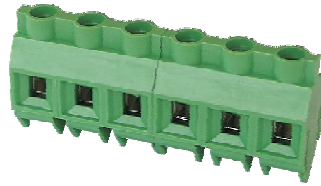
EL 5HT



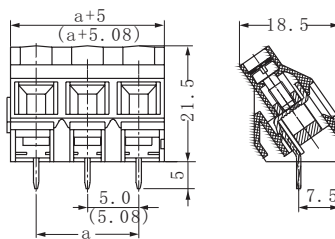
Pitch: 9.52 mm



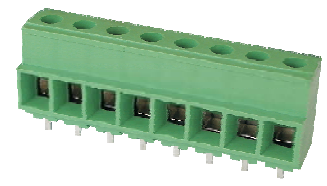
EL 5AT



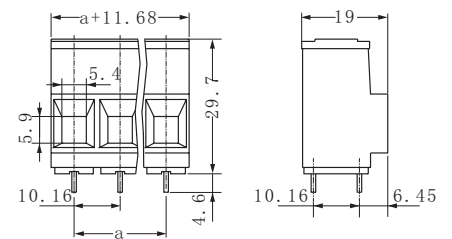
Pitch: 9.52 mm



EL 10H



Pitch: 10.16 mm



35 a ngl ed connection

IEC 数据	刚性导线 (mm ²)	柔性导线 (mm ²)	AWG	I (A)	U (V)
连接数据	0.2-6	0.2-4	24-10	32	690
绝缘材料组别	I				
污染等级	3 2 2				
过电压类别	III III II				
额定电压(V)	690 1000 1000				
额定冲击电压(KV)	8 8 6				
绝缘材料/阻燃等级 UL 94	PA/V0				
螺钉/扭矩(-/Nm)	M3/0.5-0.6				
剥线长度(mm)	8				
线路板孔径(mm)	Ø1.3				
引脚尺寸(mm)	0.9x0.9				

UL 数据

额定电压(V)/电流(A)	300/30
压线范围(AWG)	30-10

IEC Technical Data	Rigid (mm ²)	flexible (mm ²)	AWG	I (A)	U (V)
Connection data	0.2-6	0.2-4	24-10	32	690
Insulating Material Group	I				
Pollution degree	3 2 2				
Overvoltage Category	III III II				
Rate Voltage(V)	690 1000 1000				
Rate impulse Voltage(KV)	8 8 6				
Insulating material/Inflammability Class	PA/V0				
Screw/Torque(-/Nm)	M3/0.5-0.6				
Stripping length(mm)	8				
PCB Hole Diameter(mm)	Ø1.3				
Pin Dimensions(mm)	0.9x0.9				

UL Technical Data

Rate Voltage(V)/Current(A)	300/30
Wire Range(AWG)	30-10

位数/No. of positions	订货型号/Order No.
2	EL 5HT-2-9.52
3	EL 5HT-3-9.52

IEC 数据	刚性导线 (mm ²)	柔性导线 (mm ²)	AWG	I (A)	U (V)
连接数据	0.2-6	0.2-4	24-10	32	690
绝缘材料组别	I				
污染等级	3 2 2				
过电压类别	III III II				
额定电压(V)	690 1000 1000				
额定冲击电压(KV)	8 8 6				
绝缘材料/阻燃等级 UL 94	PA/V0				
螺钉/扭矩(-/Nm)	M3/0.5-0.6				
剥线长度(mm)	8				
线路板孔径(mm)	Ø1.3				
引脚尺寸(mm)	0.9x0.9				

UL 数据

额定电压(V)/电流(A)	300/30
压线范围(AWG)	30-10

IEC Technical Data	Rigid (mm ²)	flexible (mm ²)	AWG	I (A)	U (V)
Connection data	0.2-6	0.2-4	24-10	32	690
Insulating Material Group	I				
Pollution degree	3 2 2				
Overvoltage Category	III III II				
Rate Voltage(V)	690 1000 1000				
Rate impulse Voltage(KV)	8 8 6				
Insulating material/Inflammability Class	PA/V0				
Screw/Torque(-/Nm)	M3/0.5-0.6				
Stripping length(mm)	8				
PCB Hole Diameter(mm)	Ø1.3				
Pin Dimensions(mm)	0.9x0.9				

UL Technical Data

Rate Voltage(V)/Current(A)	300/30
Wire Range(AWG)	30-10

位数/No. of positions	订货型号/Order No.
2	EL 5AT-2-9.52
3	EL 5AT-3-9.52

IEC 数据	刚性导线 (mm ²)	柔性导线 (mm ²)	AWG	I (A)	U (V)
连接数据	0.5-16	0.5-10	20-6	57	690
绝缘材料组别	III a				
污染等级	3 2 2				
过电压类别	III III II				
额定电压(V)	690 1000 1000				
额定冲击电压(KV)	8 8 6				
绝缘材料/阻燃等级 UL 94	PA/V0				
螺钉/扭矩(-/Nm)	M4/1.2-1.5				
剥线长度(mm)	10				
线路板孔径(mm)	Ø2.6				
引脚尺寸(mm)	2x1.2				

UL 数据

额定电压(V)/电流(A)	300/57
压线范围(AWG)	20-6

IEC Technical Data	Rigid (mm ²)	flexible (mm ²)	AWG	I (A)	U (V)
Connection data	0.5-16	0.5-10	20-6	57	690
Insulating Material Group	III a				
Pollution degree	3 2 2				
Overvoltage Category	III III II				
Rate Voltage(V)	690 1000 1000				
Rate impulse Voltage(KV)	8 8 6				
Insulating material/Inflammability Class	PA/V0				
Screw/Torque(-/Nm)	M4/1.2-1.5				
Stripping length(mm)	10				
PCB Hole Diameter(mm)	Ø2.6				
Pin Dimensions(mm)	2x1.2				

UL Technical Data

Rate Voltage(V)/Current(A)	300/57
Wire Range(AWG)	20-6

位数/No. of positions	订货型号/Order No.
2	EL 10H-2-10.16
...	...
24	EL 10H-24-10.16